

Some other island messages

Fire!!

*We have been burnt in the past;
let's not have it happen again.*

TOTAL FIRE BAN - No open fires without a permit.

Summer brings tinder dry conditions and the Barrier relies on a volunteer fire brigade. Help is far away.

Woof Woof

Please clean up after your dog.

Dogs are required to be on a lead in any public place or on beaches. Note: Some beaches are 'dogs prohibited' because of the presence of native shorebirds. Dogs are not permitted on Department of Conservation tracks or campgrounds.

Treasure Islands

Help protect our precious island wildlife.

Check for onboard stowaways before you leave the mainland and again between the islands you visit. Are your shoes clean? Is all gear (bags) and cargo free from stowaways?



Kauri Dieback

Phytophthora taxon Agathis (PTA) or Kauri dieback, is present on the island. ACT NOW to restrict it spreading. Ensure footwear is clean before and after moving between forested areas (from mainland to island and within the island). Use the footwear cleaning stations at the entrance to DOC tracks to disinfect the soles of your shoes (salt water also works). Stick to the tracks and avoid kauri roots.



Medical (Aotea Health Ltd)

Claris - Doctor (09) 4290 356

Port Fitzroy – District Nurse (09) 4290 047

If no answer to the above numbers,
in an emergency dial 111

Pharmacy (Claris) (09) 4290 006

Tune into local radio

AOTEA FM

South - 94.6 FM

North - 104 FM

Ph (09) 4290 945

This brochure has been produced to help care for this place. Please consider passing it onto others in order to reduce the need for printing more, and recycle when finished.

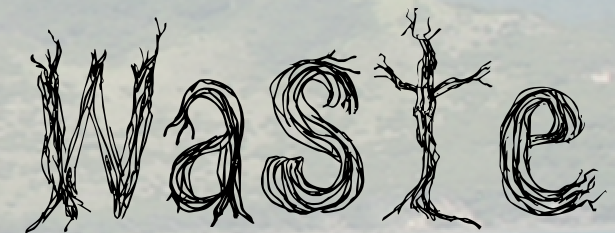
Design and text by Brigid Graney (Envirokiwi Ltd) with support from the Great Barrier Island community, Auckland Council and the Department of Conservation.

Main image courtesy of Kay Stowell.

Printed on recycled paper.

First time or returning visitor?

Welcome to Aotea 'The Barrier'



Get it sorted the
Barrier way

Welcome!

Aotea, Great Barrier Island, is a special place. Through our actions we show respect. Please join with us in caring for this place that we call home. Here's a summary of how to sort your waste, the Barrier way.

Less to Landfill

Nature knows no waste. It's an ideal we are striving for. Reduce, Reuse & Recycle.



Packaging is one of the biggest imports onto the island.

Consider this when packing and provisioning for your trip. Is there any way that packaging destined for landfill can be reduced before and during your trip?



Shop well: Buy products in containers that are reusable or recyclable. Compostable packaging is great.

Buy food in bulk: Use your own containers.

Unwrap it on the mainland: Repackage into reusable containers, remove gifts from packaging.

Say No to plastic bags: Bring your own reusable bags.



Island life is about being resourceful and creative.

It's amazing how many times things can get reused here.



Love your coffee but hate waste? Go for a zero waste drink by either ordering 'in' or take along your reusable cup. Say No to disposable cups.

Egg cartons: These are always in short supply for reusing for local eggs, save them and give to *Okiwi Passion* on Market days.

Drink bottle: Bring your own bottle to refill.



The possibilities are endless as the life cycle continues.

Help us reduce waste going to the island's landfill by following the rule;

- If you do need to leave items on the island then **SEPARATE your recyclables from landfill waste.**



Separate these items;

Recyclable

- Aluminium Cans
- Tin cans
- Plastics (1-7) – (no meat trays)
- Glass (bottles & jars)
- Cardboard & Paper

Please wash these items if appropriate.

Food Scraps

Your accommodation may use – a Bokashi bucket, compost bin, trenching technique or worm farm. It's a resource – let's use it.



If your waste came from the sea, return it to the sea.

Garden / Green Waste

Use it in the compost, as mulch or take to Claris Landfill & Recycling Centre.



Hazardous Waste

Oil and compact fluorescent light bulbs are some examples of things that are not good in landfill – take these to Claris Landfill & Recycling Centre on Grays Road for shipping off the island for safe disposal.

Claris Landfill & Recycle Centre Hours

Peak - 20 Dec to 31 Jan:

Mon to Sat: 9am-5pm
Sun and public hols: Closed

Off Peak- 1 Feb to 19 Dec:

Mon, Wed, Fri: 9am-5pm
Sat: 9am-3pm
Tues, Thurs, Sun and public hols: Closed

Disposal Options

- **Accommodation provider does it**
If your accommodation is managed by the owner or caretaker, please assist their clean up by separating your waste.
- **Do it yourself**
Want to feel like a local? Then here are your options:

Kerbside collection

Landfill waste and cardboard and paper (flattened & secure) are collected by a weekly kerbside collection.

Place out by 8am Monday morning

Leaving your accommodation? Kerbside collection not for few days? Take your landfill waste and recycling to one of the appropriate rubbish and recycling drop off points listed below, or visit the Claris Landfill & Recycling Centre.

Drop off sites

Hands on Responsibility: The island is unique when it comes to recycling. Recycling is separated by each household at various drop-off sites around the island.

Full Rubbish & Recycling

- Port FitzRoy Wharf
- Whangaparapara Wharf
- Claris (near Airport)
- Tryphena Wharf (Shoal Bay)

Recycling only

- Okiwi
- Motairehe
- Kawa (top hill)
- Okupu
- Medlands
- Puriri Bay
- Rosalie Bay Road
- Mulberry Grove

Recyclables go in the green wheelie bins – separate aluminium cans, tin cans, glass (separate by colour please) and plastics.

For more detail on what goes where, refer to the Auckland Council 'Get your waste sorted' leaflet.

Keeping our actions consistent with how we feel about this place.